

**CITY OF BLUE RIDGE
SPECIAL SESSION AGENDA
JANUARY 4, 2022, 7:00 P.M.
Blue Ridge Community Center
200 W. Tilton Street**

THE BLUE RIDGE CITY COUNCIL WILL MEET IN SPECIAL SESSION AT 7:00 P.M. ON TUESDAY, JANUARY 4, 2022, AT THE BLUE RIDGE COMMUNITY CENTER, LOCATED AT 200 W. TILTON, BLUE RIDGE, TEXAS WITH THE FOLLOWING ITEMS ON THE AGENDA FOR CONSIDERATION AND/OR ACTION.

1. Call to order, Roll Call
2. First Public Hearing to receive public comments, and discuss a request for a Preliminary Plat known as Acres at Desert Creek, an addition known as Abstract A1071 JJ McMennay Survey, Tract 2, containing 81.851 acres; and a portion of Abstract A1071 JJ McMennay Survey, Tract 3, containing 13.549 acres; for a total acreage of 95.40 acres to be a residential development of 59 site built homes; and said property is located on the East side of Texas State Highway 160 and the nearest intersection at County Road 584; and also which is located within the City of Blue Ridge's Extra Territorial Jurisdiction
3. Adjournment.

Certified this the 30th day of December, 2021.



Rhonda Williams
Mayor, City of Blue Ridge

The City Council reserves the right to adjourn into Executive Session at any time during the course of this meeting to discuss any matters listed on the agenda, as authorized by the Texas Government Code including, Sections: 551.071 (Consultation with Attorney), 551.072 (Deliberations about Real Property), 551.073 (Deliberations about Gifts and Donations), 551.074 (Personnel Matters), 551.076 (Deliberations about Security Devices), 551.087 (Economic Development), 418.183 (Deliberations about Homeland Security Issues) and as authorized by the Texas Tax Code including, but not limited to, Section 321.3022 (Sales Tax Information)

This facility is wheelchair accessible. Request for accommodations or sign interpretative services must be made 48 hours prior to this meeting. Please contact the city secretary's office at 972-752-5791 for further information.

I, the undersigned authority, do hereby certify that this notice was posted in the regular posting place of the City Hall building for Blue Ridge, Texas, in a place and manner convenient and readily accessible to the general public at all times, and said Notice was posted December 30, 2021 by 5:00P.M. and remained so posted continuously at least 72 hours proceeding the scheduled time of said meeting.



Edie Sims, City Secretary



**LEGAL NOTICE
PUBLIC HEARING**

A First Public Hearing of the City of Blue Ridge City Council for Tuesday, January 4, 2022 at 7:00pm at the Blue Ridge Community Center located at 200 W. Tilton to receive public comments and to hear the request for a Preliminary Plat known as Acres at Desert Creek, an addition known as Abstract A1071 JJ McMennay Survey, Tract 2, containing 81.851 acres; and a portion of Abstract A1071 JJ McMennay Survey, Tract 3, containing 13.549 acres; for a total acreage of 95.40 acres to be a residential development of 59 site built homes; and said property is located on the East side of Texas State Highway 160 and the nearest intersection at County Road 584; and also which is located within the City of Blue Ridge's Extra Territorial Jurisdiction.

This hearing is open to any interested persons. Opinions, objections and/or comments relative to this matter may be expressed in writing or in person at the hearing.

~~~~~

A Second Public Hearing of the City of Blue Ridge City Council for Tuesday, January 4, 2022 at 7:00pm at the Blue Ridge Community Center located at 200 W. Tilton to receive public comments and to hear the request for a Preliminary Plat known as Acres at Desert Creek, an addition known as Abstract A1071 JJ McMennay Survey, Tract 2, containing 81.851 acres; and a portion of Abstract A1071 JJ McMennay Survey, Tract 3, containing 13.549 acres; for a total acreage of 95.40 acres to be a residential development of 59 site built homes; and said property is located on the East side of Texas State Highway 160 and the nearest intersection at County Road 584; and also which is located within the City of Blue Ridge's Extra Territorial Jurisdiction.

This hearing is open to any interested persons. Opinions, objections and/or comments relative to this matter may be expressed in writing or in person at the hearing.

# *VICINITY MAP*

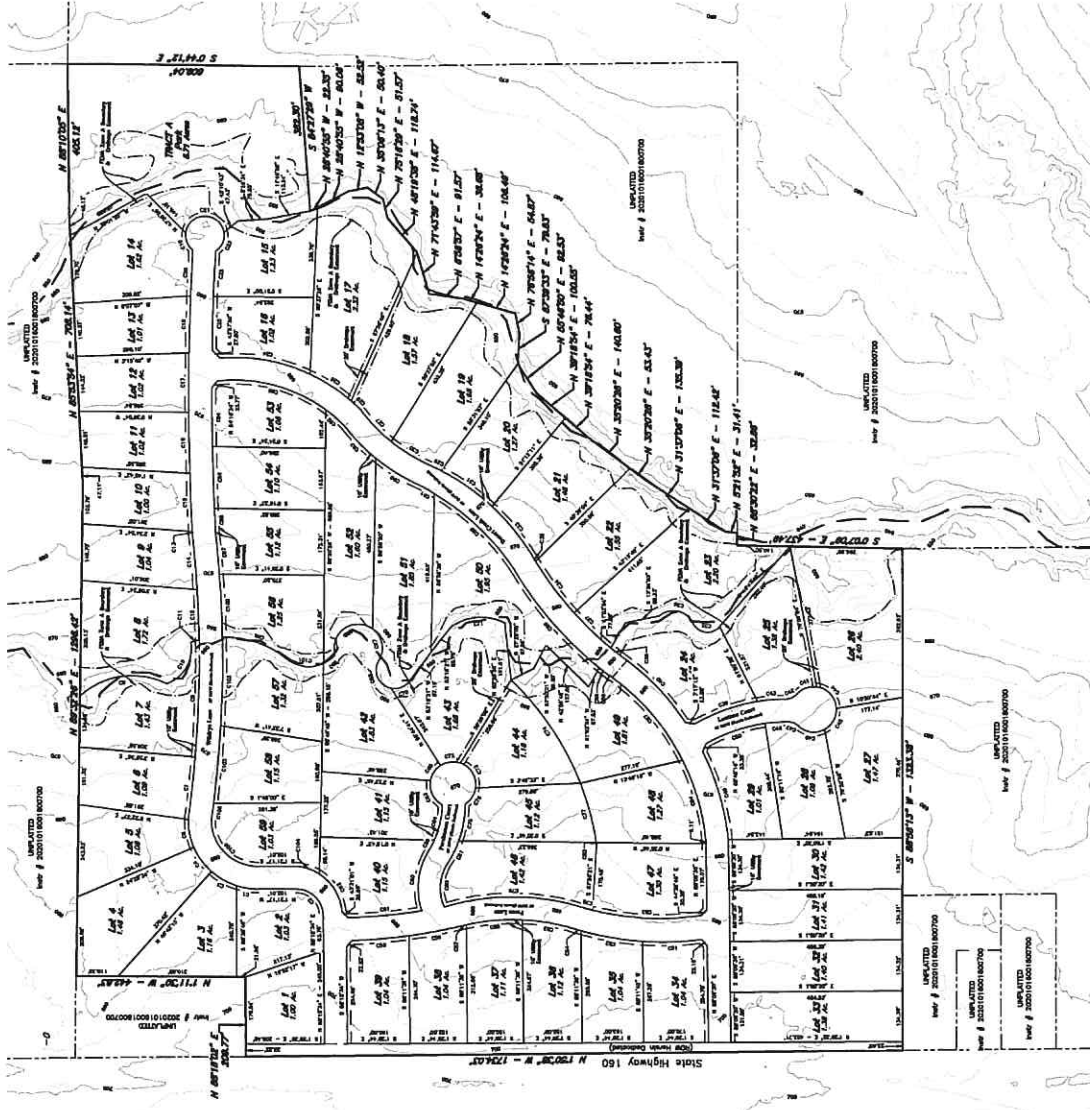




Lots 1 thru 59

# Acres at Desert Creek Residential Subdivision

VICINITY MAP



### GENERAL NOTES:

1. Heavy lines indicate plat lines.
2. All areas and measurements within plat lines are herein indicated.
3. All areas and measurements within plat lines are herein indicated. All areas and measurements within plat lines are herein indicated.
4. All areas and measurements within plat lines are herein indicated.
5. All areas and measurements within plat lines are herein indicated.
6. All areas and measurements within plat lines are herein indicated.
7. All areas and measurements within plat lines are herein indicated.
8. All areas and measurements within plat lines are herein indicated.
9. All areas and measurements within plat lines are herein indicated.
10. All areas and measurements within plat lines are herein indicated.
11. All areas and measurements within plat lines are herein indicated.
12. All areas and measurements within plat lines are herein indicated.
13. All areas and measurements within plat lines are herein indicated.
14. All areas and measurements within plat lines are herein indicated.
15. All areas and measurements within plat lines are herein indicated.
16. All areas and measurements within plat lines are herein indicated.
17. All areas and measurements within plat lines are herein indicated.
18. All areas and measurements within plat lines are herein indicated.
19. All areas and measurements within plat lines are herein indicated.
20. All areas and measurements within plat lines are herein indicated.

### CCSC Notes:

1. All areas and measurements within plat lines are herein indicated.
2. All areas and measurements within plat lines are herein indicated.
3. All areas and measurements within plat lines are herein indicated.
4. All areas and measurements within plat lines are herein indicated.
5. All areas and measurements within plat lines are herein indicated.
6. All areas and measurements within plat lines are herein indicated.
7. All areas and measurements within plat lines are herein indicated.
8. All areas and measurements within plat lines are herein indicated.
9. All areas and measurements within plat lines are herein indicated.
10. All areas and measurements within plat lines are herein indicated.
11. All areas and measurements within plat lines are herein indicated.
12. All areas and measurements within plat lines are herein indicated.
13. All areas and measurements within plat lines are herein indicated.
14. All areas and measurements within plat lines are herein indicated.
15. All areas and measurements within plat lines are herein indicated.
16. All areas and measurements within plat lines are herein indicated.
17. All areas and measurements within plat lines are herein indicated.
18. All areas and measurements within plat lines are herein indicated.
19. All areas and measurements within plat lines are herein indicated.
20. All areas and measurements within plat lines are herein indicated.

### CCSC Notes:

1. All areas and measurements within plat lines are herein indicated.
2. All areas and measurements within plat lines are herein indicated.
3. All areas and measurements within plat lines are herein indicated.
4. All areas and measurements within plat lines are herein indicated.
5. All areas and measurements within plat lines are herein indicated.
6. All areas and measurements within plat lines are herein indicated.
7. All areas and measurements within plat lines are herein indicated.
8. All areas and measurements within plat lines are herein indicated.
9. All areas and measurements within plat lines are herein indicated.
10. All areas and measurements within plat lines are herein indicated.
11. All areas and measurements within plat lines are herein indicated.
12. All areas and measurements within plat lines are herein indicated.
13. All areas and measurements within plat lines are herein indicated.
14. All areas and measurements within plat lines are herein indicated.
15. All areas and measurements within plat lines are herein indicated.
16. All areas and measurements within plat lines are herein indicated.
17. All areas and measurements within plat lines are herein indicated.
18. All areas and measurements within plat lines are herein indicated.
19. All areas and measurements within plat lines are herein indicated.
20. All areas and measurements within plat lines are herein indicated.

| Lot | Area | Dimensions      | Notes |
|-----|------|-----------------|-------|
| 1   | 0.12 | 10.00' x 12.00' |       |
| 2   | 0.12 | 10.00' x 12.00' |       |
| 3   | 0.12 | 10.00' x 12.00' |       |
| 4   | 0.12 | 10.00' x 12.00' |       |
| 5   | 0.12 | 10.00' x 12.00' |       |
| 6   | 0.12 | 10.00' x 12.00' |       |
| 7   | 0.12 | 10.00' x 12.00' |       |
| 8   | 0.12 | 10.00' x 12.00' |       |
| 9   | 0.12 | 10.00' x 12.00' |       |
| 10  | 0.12 | 10.00' x 12.00' |       |
| 11  | 0.12 | 10.00' x 12.00' |       |
| 12  | 0.12 | 10.00' x 12.00' |       |
| 13  | 0.12 | 10.00' x 12.00' |       |
| 14  | 0.12 | 10.00' x 12.00' |       |
| 15  | 0.12 | 10.00' x 12.00' |       |
| 16  | 0.12 | 10.00' x 12.00' |       |
| 17  | 0.12 | 10.00' x 12.00' |       |
| 18  | 0.12 | 10.00' x 12.00' |       |
| 19  | 0.12 | 10.00' x 12.00' |       |
| 20  | 0.12 | 10.00' x 12.00' |       |
| 21  | 0.12 | 10.00' x 12.00' |       |
| 22  | 0.12 | 10.00' x 12.00' |       |
| 23  | 0.12 | 10.00' x 12.00' |       |
| 24  | 0.12 | 10.00' x 12.00' |       |
| 25  | 0.12 | 10.00' x 12.00' |       |
| 26  | 0.12 | 10.00' x 12.00' |       |
| 27  | 0.12 | 10.00' x 12.00' |       |
| 28  | 0.12 | 10.00' x 12.00' |       |
| 29  | 0.12 | 10.00' x 12.00' |       |
| 30  | 0.12 | 10.00' x 12.00' |       |
| 31  | 0.12 | 10.00' x 12.00' |       |
| 32  | 0.12 | 10.00' x 12.00' |       |
| 33  | 0.12 | 10.00' x 12.00' |       |
| 34  | 0.12 | 10.00' x 12.00' |       |
| 35  | 0.12 | 10.00' x 12.00' |       |
| 36  | 0.12 | 10.00' x 12.00' |       |
| 37  | 0.12 | 10.00' x 12.00' |       |
| 38  | 0.12 | 10.00' x 12.00' |       |
| 39  | 0.12 | 10.00' x 12.00' |       |
| 40  | 0.12 | 10.00' x 12.00' |       |
| 41  | 0.12 | 10.00' x 12.00' |       |
| 42  | 0.12 | 10.00' x 12.00' |       |
| 43  | 0.12 | 10.00' x 12.00' |       |
| 44  | 0.12 | 10.00' x 12.00' |       |
| 45  | 0.12 | 10.00' x 12.00' |       |
| 46  | 0.12 | 10.00' x 12.00' |       |
| 47  | 0.12 | 10.00' x 12.00' |       |
| 48  | 0.12 | 10.00' x 12.00' |       |
| 49  | 0.12 | 10.00' x 12.00' |       |
| 50  | 0.12 | 10.00' x 12.00' |       |
| 51  | 0.12 | 10.00' x 12.00' |       |
| 52  | 0.12 | 10.00' x 12.00' |       |
| 53  | 0.12 | 10.00' x 12.00' |       |
| 54  | 0.12 | 10.00' x 12.00' |       |
| 55  | 0.12 | 10.00' x 12.00' |       |
| 56  | 0.12 | 10.00' x 12.00' |       |
| 57  | 0.12 | 10.00' x 12.00' |       |
| 58  | 0.12 | 10.00' x 12.00' |       |
| 59  | 0.12 | 10.00' x 12.00' |       |

**LEGEND**

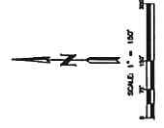
- Plat Lines
- Adjacent Lot Line
- Easement
- Utility Easement
- Creek Water Line

**Preliminary Plat**

This plat is preliminary and is not to be used for any other purpose without the approval of the proper authorities.

**Lots 1-59**  
Acres at Desert Creek Addition  
to the County of Collin, Texas  
Total ±95.40 acres

**COOPER & ASSOCIATES, P.C.**  
Surveyors  
1000 Westwood Drive, Suite 100  
Frisco, Texas 75034  
Phone: 972.291.1111  
Fax: 972.291.1112



Preliminary

for inspection purposes only and in no way official or approved for recording purposes.



**CITY OF BLUE RIDGE  
REGULAR SESSION AGENDA  
JANUARY 4, 2022, 7:00 P.M. ①  
Blue Ridge Community Center  
200 W. Tilton Street**

THE BLUE RIDGE CITY COUNCIL WILL MEET IN SPECIAL SESSION AT 7:00 P.M. ON TUESDAY,  
JANUARY 4, 2022, AT THE BLUE RIDGE COMMUNITY CENTER, LOCATED AT  
200 W. TILTON, BLUE RIDGE, TEXAS WITH THE FOLLOWING ITEMS ON THE AGENDA FOR  
CONSIDERATION AND/OR ACTION.

1. Call to order, Roll Call
2. Prayer and Pledges of Allegiance
3. Announcements relating to items of public interest
4. Public Comment: This is an opportunity for the public to address the Council on any matter not included on the agenda, except public hearings. Comments related to public hearings will be heard when the specific hearing begins. Public comments are limited to three (3) minutes per speaker, unless the speaker requires the assistance of a translator, in which case the speaker is limited to six (6) minutes, in accordance with applicable law. To address the Council, speakers MUST complete a Speaker Form and provide it to the City Secretary PRIOR to the start of the meeting. Each speaker shall approach the front of the Council and state his/her name and street address before speaking. Speakers shall address the Council with civility that is conducive to appropriate public discussion. The public cannot speak from the gallery but only from the front of the Council. Per the Texas Open Meetings Act, the Council is not permitted to take action on or discuss any item not listed on the agenda. The Council may: (1) make a statement of fact regarding the item; (2) make a recitation of existing policy; or (3) propose the item be placed on a future agenda, in accordance with Council procedures.
5. Consent Agenda (All matters listed under the Consent Agenda for discussion and possible actions are considered to be routine by the City Council and require little or no deliberation. There will not be a separate discussion of these items and the Consent Agenda items will be enacted by one vote. If a Council Member expresses a desire to discuss a matter listed on the Consent Agenda, the item will be considered separately).
  - a. Discuss, approve or disapprove the minutes from Regular Session held December 7, 2021; Special Session held December 7, 2021 and Special Session held December 14, 2021
  - b. Public Works Update;
  - c. City Financial Report;
  - d. Fire Department Report;
  - e. Animal Control Report
6. Second Public Hearing to consider, discuss and act upon a request for a Preliminary Plat known as Acres at Desert Creek, an addition known as Abstract A1071 JJ McMennay Survey, Tract 2, containing 81.851 acres; and a portion of Abstract A1071 JJ McMennay Survey, Tract 3, containing 13.549 acres; for a total acreage of 95.40 acres to be a residential development of 59 site built homes; and said property is located on the East side of Texas State Highway 160 and the nearest intersection at County Road 584; and also which is located within the City of Blue Ridge's Extra Territorial Jurisdiction
7. Receive Voluntary Annexation, Text Amendment and Rezone Schedule for Blue Ridge Crossing

8. Receive a presentation from Nick Bulaich with Hilltop Securities regarding an overview for a Public Improvement District ("PID")
9. Consider, discuss and act upon a contract modification for Ambulance Services for Fiscal Year 2021-2022 through Collin County
10. State of the City – a reflection of 2021
11. Receive a presentation named "What were you thinking?", a photographic view of Public Works issues found and resolved
12. Receive information regarding Code Enforcement policies and consider steps to encourage cleanup by residents to improve our City
13. Discussion of placing items on future agendas
14. Adjournment.

Certified this the 30<sup>th</sup> day of December, 2021.



Rhonda Williams  
Mayor, City of Blue Ridge

*The City Council reserves the right to adjourn into Executive Session at any time during the course of this meeting to discuss any matters listed on the agenda, as authorized by the Texas Government Code including, Sections: 551.071 (Consultation with Attorney), 551.072 (Deliberations about Real Property), 551.073 (Deliberations about Gifts and Donations), 551.074 (Personnel Matters), 551.076 (Deliberations about Security Devices), 551.087 (Economic Development), 418.183 (Deliberations about Homeland Security Issues) and as authorized by the Texas Tax Code including, but not limited to, Section 321.3022 ( Sales Tax Information)*

*This facility is wheelchair accessible. Request for accommodations or sign interpretative services must be made 48 hours prior to this meeting. Please contact the city secretary's office at 972-752-5791 for further information.*

I, the undersigned authority, do hereby certify that this notice was posted in the regular posting place of the City Hall building for Blue Ridge, Texas, in a place and manner convenient and readily accessible to the general public at all times, and said Notice was posted December 30, 2021 by 5:00 P.M. and remained so posted continuously at least 72 hours proceeding the scheduled time of said meeting.



Edie Sims, City Secretary

Minutes will be provided at the meeting

## **December 2021 Public Works Report**

- Water leak – homeowner hit line without calling in
- Finished upgraded water/sewer and manhole on S Main
- Dealt with shop being burglarized
- Potholes filled – Harmon, N Church
- Water leak repaired on S Bus 78
- 2 water leaks repaired at 411 N Bus 78
- Used millings to resurface S Main
- Water leak at 500 State Hwy 78
- Well 2 filter cleared and roto meter cleared
- Replaced injector at Well 2



| DATE       | WO#  | ADDRESS             | NOTES                       | COMPLETED  |
|------------|------|---------------------|-----------------------------|------------|
| 12/2/2021  | 5506 | 306 Bratcher        | Read meter                  | 12/2/2021  |
| 12/2/2021  | 5507 | 221 Pritchard       | Turn off for closed service | 12/10/2021 |
| 12/3/2021  | 5508 | 219 Pritchard       | Turn off for closed service | 12/10/2021 |
|            | 5509 | VOID                |                             |            |
|            | 5510 | VOID                |                             |            |
| 12/6/2021  | 5511 | 511 N Bus 78        | Turn on new service         | 12/6/2021  |
| 12/6/2021  | 5512 | 406 FM 545          | Water valve leak            | 12/6/2021  |
| 12/6/2021  | 5513 | 306 Bratcher        | Turn on new service         | pending    |
| 12/7/2021  | 5514 | 306 Oak             | Turn on new service         | 12/7/2021  |
| 12/7/2021  | 5515 | 203 Hilltop         | Deliver trash totes         | 12/7/2021  |
| 12/9/2021  | 5516 | 213 Pritchard       | Turn off for closed service | 12/17/2021 |
| 12/13/2021 | 5517 | 202 N Church        | pick up trash tote          | 12/13/2021 |
| 12/16/2021 | 5518 | 306 Bratcher        | Turn off for closed service | pending    |
| 12/17/2021 | 5519 | 306 Oak             | Turn off for closed service | pending    |
| 12/17/2021 | 5520 | 2 Bowling Lane      | Turn on new service         | 12/17/2021 |
| 12/20/2021 | 5521 | 313 W Lamm          | Deliver trash totes         | 12/20/2021 |
| 12/20/2021 | 5522 | 103 B Harmon Circle | Turn off for closed service | 12/20/2021 |
| 12/21/2021 | 5523 | 103 B Harmon Circle | Turn on new service         | 12/20/2021 |
| 12/22/2021 | 5524 | 9 Bowling Lane      | Turn on new service         | 12/22/2021 |
| 12/28/2021 | 5525 | 210 Hilltop         | Deliver trash totes         | pending    |

**City of Blue Ridge General Fund**  
**Profit & Loss Budget vs. Actual**  
 October 2021 through September 2022

|                                                   | Oct '21 - Sep 22  | Budget            | \$ Over Budget     | % of Budget  |
|---------------------------------------------------|-------------------|-------------------|--------------------|--------------|
| <b>Ordinary Income/Expense</b>                    |                   |                   |                    |              |
| <b>Income</b>                                     |                   |                   |                    |              |
| 4510 - Court Income                               | 0.00              | 1,500.00          | -1,500.00          | 0.0%         |
| 4515 - Copies & Faxes                             | 0.00              | 20.00             | -20.00             | 0.0%         |
| 4520 - Donation                                   | 1,000.00          |                   |                    |              |
| 4525 - Franchise Tax Income                       | 10,941.86         | 46,000.00         | -35,058.14         | 23.8%        |
| 4570 - Permit & Inspection Fees                   | 1,021.80          | 28,000.00         | -26,978.20         | 3.6%         |
| 4571 - Replat/Rezone Fees                         | 0.00              | 2,500.00          | -2,500.00          | 0.0%         |
| 4572 - Retainer Fee for Plats                     | 1,370.00          | 5,000.00          | -3,630.00          | 27.4%        |
| 4580 - Sales Tax Income                           | 42,173.65         | 300,000.00        | -257,826.35        | 14.1%        |
| 4600 - Property Tax Income                        | 173,147.30        | 324,693.71        | -151,546.41        | 53.3%        |
| 4900 - Payroll from Revenue Account               | 0.00              | 72,000.00         | -72,000.00         | 0.0%         |
| <b>Total Income</b>                               | <b>229,654.61</b> | <b>779,713.71</b> | <b>-550,059.10</b> | <b>29.5%</b> |
| <b>Gross Profit</b>                               | <b>229,654.61</b> | <b>779,713.71</b> | <b>-550,059.10</b> | <b>29.5%</b> |
| <b>Expense</b>                                    |                   |                   |                    |              |
| 5100 - Advertising                                | 90.00             |                   |                    |              |
| 5110 - Ambulance Service                          | 0.00              | 9,645.00          | -9,645.00          | 0.0%         |
| 5130 - Animal Control Services                    | 4,120.89          | 8,910.00          | -4,789.11          | 46.3%        |
| 5140 - Bank Fees                                  | 0.00              | 150.00            | -150.00            | 0.0%         |
| 5150 - Codification                               | 1,350.00          | 1,200.00          | 150.00             | 112.5%       |
| 5160 - Contract Labor                             |                   |                   |                    |              |
| 5161 - Code Enforcement                           | 1,400.00          | 8,400.00          | -7,000.00          | 16.7%        |
| 5160 - Contract Labor - Other                     | 7,326.89          | 65,000.00         | -57,673.11         | 11.3%        |
| <b>Total 5160 - Contract Labor</b>                | <b>8,726.89</b>   | <b>73,400.00</b>  | <b>-64,673.11</b>  | <b>11.9%</b> |
| 5170 - Copies                                     | -12.75            | 25.00             | -37.75             | -51.0%       |
| 5180 - Council & Mayor Expense                    | 0.00              | 500.00            | -500.00            | 0.0%         |
| 5210 - Election Expense                           | 0.00              | 5,000.00          | -5,000.00          | 0.0%         |
| 5230 - Fuel Expense - General                     | 359.28            | 2,200.00          | -1,840.72          | 16.3%        |
| 5231 - Fuel Expense - Fire Dept                   | 1,182.75          | 4,100.00          | -2,917.25          | 28.8%        |
| 5237 - Court - Petty Cash                         | 0.00              | 0.00              | 0.00               | 0.0%         |
| 5238 - Court Payroll                              | 200.00            | 7,200.00          | -7,000.00          | 2.8%         |
| 5240 - Grants                                     |                   |                   |                    |              |
| 5241 - Parks Grant                                | 0.00              | 0.00              | 0.00               | 0.0%         |
| 5242 - Planning & Capacity                        | 0.00              | 0.00              | 0.00               | 0.0%         |
| <b>Total 5240 - Grants</b>                        | <b>0.00</b>       | <b>0.00</b>       | <b>0.00</b>        | <b>0.0%</b>  |
| 5250 - Inspection Expense                         | 0.00              | 7,500.00          | -7,500.00          | 0.0%         |
| 5260 - Insurance -Liab/Comp/Prop                  | 7,834.41          | 27,000.00         | -19,165.59         | 29.0%        |
| 5261 - Insurance - Fire Dept                      | 0.00              | 10,000.00         | -10,000.00         | 0.0%         |
| 5270 - Janitorial General                         | 63.77             | 550.00            | -486.23            | 11.6%        |
| 5300 - Legal & Professional Fees                  |                   |                   |                    |              |
| 5301 - Legal Notices/Publications                 | 717.00            | 2,000.00          | -1,283.00          | 35.9%        |
| 5300 - Legal & Professional Fees - Other          | 14,811.84         | 15,000.00         | -188.16            | 98.7%        |
| <b>Total 5300 - Legal &amp; Professional Fees</b> | <b>15,528.84</b>  | <b>17,000.00</b>  | <b>-1,471.16</b>   | <b>91.3%</b> |
| 5302 - Parks & Recreation                         | 200.00            | 1,500.00          | -1,300.00          | 13.3%        |
| 5305 - Storage Unit Rent                          | 0.00              | 0.00              | 0.00               | 0.0%         |
| 5310 - Maint. & Repair Equipment                  | 0.00              | 1,000.00          | -1,000.00          | 0.0%         |
| 5315 - Bldg Maintenance & Repair                  | 0.00              | 1,200.00          | -1,200.00          | 0.0%         |
| 5320 - Maint. & Repair Office Equ                 | 0.00              | 500.00            | -500.00            | 0.0%         |
| 5321 - Vehicle Maintenance & Repair               | 907.30            | 2,000.00          | -1,092.70          | 45.4%        |
| 5325 - Miscellaneous Expense                      | 1,537.36          | 5,000.00          | -3,462.64          | 30.7%        |
| 5330 - Mowing Expense                             | 0.00              | 1,000.00          | -1,000.00          | 0.0%         |
| 5340 - Office Supplies                            |                   |                   |                    |              |
| 5341 - Office Equipment                           | 204.78            | 3,000.00          | -2,795.22          | 6.8%         |
| 5340 - Office Supplies - Other                    | 740.45            | 2,000.00          | -1,259.55          | 37.0%        |
| <b>Total 5340 - Office Supplies</b>               | <b>945.23</b>     | <b>5,000.00</b>   | <b>-4,054.77</b>   | <b>18.9%</b> |
| 5350 - Parts & Equipment Expense                  | 979.17            | 2,500.00          | -1,520.83          | 39.2%        |
| 5361 - Property Tax Expense                       | 1,088.00          | 2,154.00          | -1,066.00          | 50.5%        |
| 5370 - Payroll Expenses                           |                   |                   |                    |              |
| 5370.2 - EMP AD&D                                 | -0.96             |                   |                    |              |
| 5372 - Health Insurance - TML                     |                   |                   |                    |              |
| 5372.0 - Health Insurance - Company               | 1,535.70          |                   |                    |              |
| 5372 - Health Insurance - TML - Other             | 11,689.61         |                   |                    |              |
| <b>Total 5372 - Health Insurance - TML</b>        | <b>13,225.31</b>  |                   |                    |              |
| 5374 - Medicare Expenses                          | 858.95            |                   |                    |              |
| 5375 - TMRS                                       | 5,578.01          |                   |                    |              |
| 5376 - SS Expenses                                | 3,633.08          |                   |                    |              |
| 5377 - TWG Expenses                               | 15.21             |                   |                    |              |
| 5379 - Wages                                      | 29,739.06         |                   |                    |              |
| 5370 - Payroll Expenses - Other                   | 32,348.86         | 190,000.00        | -157,651.14        | 17.0%        |
| <b>Total 5370 - Payroll Expenses</b>              | <b>85,397.52</b>  | <b>190,000.00</b> | <b>-104,602.48</b> | <b>44.9%</b> |
| 5380 - Postage, Freight & Shipping                | 112.30            | 325.00            | -212.70            | 34.6%        |
| 5390 - Filing Fees                                | 0.00              | 1,800.00          | -1,800.00          | 0.0%         |
| 5399 - Petty Cash                                 | 52.10             | 0.00              | 52.10              | 100.0%       |

**City of Blue Ridge General Fund**  
**Profit & Loss Budget vs. Actual**  
**October 2021 through September 2022**

|                                            | Oct '21 - Sep 22  | Budget            | \$ Over Budget     | % of Budget   |
|--------------------------------------------|-------------------|-------------------|--------------------|---------------|
| <b>5600 · Road Construction</b>            |                   |                   |                    |               |
| 5602 · Street Projects                     | 2,340.00          | 100,000.00        | -97,660.00         | 2.3%          |
| 5600 · Road Construction - Other           | 0.00              | 20,000.00         | -20,000.00         | 0.0%          |
| <b>Total 5600 · Road Construction</b>      | <b>2,340.00</b>   | <b>120,000.00</b> | <b>-117,660.00</b> | <b>2.0%</b>   |
| <b>5510 · Sales Tax Expense (Trash)</b>    | <b>2,004.09</b>   |                   |                    |               |
| 5512 · Vehicle Purchase                    | 0.00              | 59,000.00         | -59,000.00         | 0.0%          |
| 5530 · Seminars - Training Courses         | 0.00              | 3,400.00          | -3,400.00          | 0.0%          |
| 5535 · Special Project                     | 485.25            | 0.00              | 485.25             | 100.0%        |
| 5540 · Subscriptions, Dues & Permits       | 422.83            | 5,500.00          | -5,077.17          | 7.7%          |
| 5700 · Trash                               | 437.29            | 2,500.00          | -2,062.71          | 17.5%         |
| <b>5710 · Travel/Mileage</b>               | <b>0.00</b>       | <b>300.00</b>     | <b>-300.00</b>     | <b>0.0%</b>   |
| <b>5715 · Computer</b>                     |                   |                   |                    |               |
| 5716 · Consulting Fees                     | 3,043.08          | 9,883.00          | -6,839.92          | 30.8%         |
| <b>Total 5715 · Computer</b>               | <b>3,043.08</b>   | <b>9,883.00</b>   | <b>-6,839.92</b>   | <b>30.8%</b>  |
| <b>5720 · Utilities</b>                    |                   |                   |                    |               |
| 5721 · Electric Services                   | 11,661.36         | 32,995.00         | -21,333.64         | 35.3%         |
| 5724 · Natural Gas Services                | 218.00            | 750.00            | -532.00            | 29.1%         |
| 5726 · Telephone Services General          | 1,510.02          | 4,553.00          | -3,042.98          | 33.2%         |
| <b>Total 5720 · Utilities</b>              | <b>13,389.38</b>  | <b>38,298.00</b>  | <b>-24,908.62</b>  | <b>35.0%</b>  |
| <b>5750 · Uniforms</b>                     | <b>0.00</b>       | <b>500.00</b>     | <b>-500.00</b>     | <b>0.0%</b>   |
| <b>5900 · Debt Service-Principal</b>       |                   |                   |                    |               |
| 5901 · Loan - Equipment                    | 1,976.64          | 5,517.00          | -3,540.36          | 35.8%         |
| 5903 · Certificate of Obligation           | 0.00              | 44,015.00         | -44,015.00         | 0.0%          |
| 5900 · Debt Service-Principal - Other      | 0.00              | 0.00              | 0.00               | 0.0%          |
| <b>Total 5900 · Debt Service-Principal</b> | <b>1,976.64</b>   | <b>49,532.00</b>  | <b>-47,555.36</b>  | <b>4.0%</b>   |
| <b>5930 · Debt Service-Interest</b>        | <b>0.00</b>       | <b>8,838.00</b>   | <b>-8,838.00</b>   | <b>0.0%</b>   |
| <b>5950 · Capital Outlay</b>               | <b>0.00</b>       | <b>93,603.71</b>  | <b>-93,603.71</b>  | <b>0.0%</b>   |
| <b>Total Expense</b>                       | <b>154,761.62</b> | <b>779,713.71</b> | <b>-624,952.09</b> | <b>19.8%</b>  |
| <b>Net Ordinary Income</b>                 | <b>74,892.99</b>  | <b>0.00</b>       | <b>74,892.99</b>   | <b>100.0%</b> |
| <b>Other Income/Expense</b>                |                   |                   |                    |               |
| <b>Other Income</b>                        |                   |                   |                    |               |
| 4210 · Earned Interest                     | 0.67              | 0.00              | 0.67               | 100.0%        |
| <b>Total Other Income</b>                  | <b>0.67</b>       | <b>0.00</b>       | <b>0.67</b>        | <b>100.0%</b> |
| <b>Net Other Income</b>                    | <b>0.67</b>       | <b>0.00</b>       | <b>0.67</b>        | <b>100.0%</b> |
| <b>Net Income</b>                          | <b>74,893.66</b>  | <b>0.00</b>       | <b>74,893.66</b>   | <b>100.0%</b> |



## City of Blue Ridge Revenue Profit & Loss Budget vs. Actual October 2021 through September 2022

|                                       | Oct '21 - Sep 22 | Budget     | \$ Over Budget | % of Budget |
|---------------------------------------|------------------|------------|----------------|-------------|
| <b>Ordinary Income/Expense</b>        |                  |            |                |             |
| <b>Income</b>                         |                  |            |                |             |
| 4600 · Grant Income                   | 183,608.30       |            |                |             |
| 4700 · Water Bill Income              | 250,182.03       | 354,359.50 | -104,177.47    | 70.6%       |
| 4701 · Transfer Fee                   | 15.50            | 0.00       | 15.50          | 100.0%      |
| 4702 · Sewer Charges                  | 40,386.47        | 165,692.00 | -125,305.53    | 24.4%       |
| 4703 · Late Charges                   | 6,845.47         | 20,000.00  | -13,154.53     | 34.2%       |
| 4704 · Trash Charges                  | 32,297.28        | 115,547.00 | -83,249.72     | 28.0%       |
| 4705 · Water Surcharge                | 1,161.00         | 4,350.00   | -3,189.00      | 26.7%       |
| 4706 · NSF Fee                        | 0.00             | 92.00      | -92.00         | 0.0%        |
| 4707 · Conservation Fee Income        | 1,473.39         | 6,540.00   | -5,066.61      | 22.5%       |
| 4708 · Reconnect Fees                 | 3,136.50         | 3,600.00   | -463.50        | 87.1%       |
| 4709 · Credit Card Fees               | 1,337.96         | 0.00       | 1,337.96       | 100.0%      |
| 4710 · Water Tap Fee                  | 0.00             | 4,650.00   | -4,650.00      | 0.0%        |
| 4711 · Sewer Tap Fee                  | 0.00             | 4,650.00   | -4,650.00      | 0.0%        |
| 4750 · Water Deposit                  | 1,810.00         | 11,000.00  | -9,190.00      | 16.5%       |
| 4751 · Sales Tax - Trash              | 2,646.09         | 9,600.00   | -6,953.91      | 27.6%       |
| 4752 · Water                          | 794.15           |            |                |             |
| 4753 · Non Refund. Deposit Fee        | 653.19           | 1,000.00   | -346.81        | 65.3%       |
| 4799 · Miscellaneous Revenue          | 500.00           | 10,000.00  | -9,500.00      | 5.0%        |
| 4899 · Misc Income                    | 1,209.99         |            |                |             |
| <b>Total Income</b>                   | 528,057.32       | 711,080.50 | -183,023.18    | 74.3%       |
| <b>Expense</b>                        |                  |            |                |             |
| 5150 · Bond Payment                   | 0.00             | 65,982.50  | -65,982.50     | 0.0%        |
| 5160 · Contract Labor                 | 76,330.62        | 60,000.00  | 16,330.62      | 127.2%      |
| 5229 · Finance Fee                    | 83.20            | 1,200.00   | -1,116.80      | 6.9%        |
| 5230 · Fuel Expense                   | 510.20           | 5,800.00   | -5,289.80      | 8.8%        |
| 5240 · Grants                         |                  |            |                |             |
| 5241 · Automated Meter Reading System | 183,730.50       | 0.00       | 183,730.50     | 100.0%      |
| 5242 · Sewer Grant Match              | 6,000.00         | 12,500.00  | -6,500.00      | 48.0%       |
| 5240 · Grants - Other                 | 5,000.00         |            |                |             |
| <b>Total 5240 · Grants</b>            | 194,730.50       | 12,500.00  | 182,230.50     | 1,557.8%    |
| 5270 · Janitorial                     | 184.50           | 550.00     | -365.50        | 33.5%       |
| 5300 · Legal & Professional Fees      | 15.00            | 19,000.00  | -18,985.00     | 0.1%        |
| 5301 · Engineering Fees               | 3,224.30         | 26,000.00  | -22,775.70     | 12.4%       |
| 5310 · Maint. & Repair Equipment      | 11,037.28        | 15,000.00  | -3,962.72      | 73.6%       |
| 5320 · Maint. & Repair Office Equ     | 0.00             | 0.00       | 0.00           | 0.0%        |
| 5325 · Miscellaneous Expense          | 2,266.98         | 5,000.00   | -2,733.02      | 45.3%       |
| 5340 · Office Supplies                | 463.18           | 2,000.00   | -1,536.82      | 23.2%       |
| 5370 · Payroll Expenses               |                  |            |                |             |
| 5370.1 · Emp Life                     | 0.48             |            |                |             |
| 5372 · Health Insurance - TML         | 204.50           |            |                |             |

## City of Blue Ridge Revenue Profit & Loss Budget vs. Actual October 2021 through September 2022

|                                        | Oct '21 - Sep 22  | Budget            | \$ Over Budget     | % of Budget   |
|----------------------------------------|-------------------|-------------------|--------------------|---------------|
| 5374 · Medicare Expenses               | 22.95             |                   |                    |               |
| 5375 · TMRS                            | 38.57             |                   |                    |               |
| 5376 · SS Expenses                     | 98.19             |                   |                    |               |
| 5377 · TWC Expenses                    | 9.60              |                   |                    |               |
| 5379 · Wages                           | 1,627.26          |                   |                    |               |
| 5370 · Payroll Expenses - Other        | 2,001.55          | 122,400.00        | -120,398.45        | 1.6%          |
| <b>Total 5370 · Payroll Expenses</b>   | <b>4,003.10</b>   | <b>122,400.00</b> | <b>-118,396.90</b> | <b>3.3%</b>   |
| 5378 · Uniforms                        | 0.00              | 200.00            | -200.00            | 0.0%          |
| 5380 · Postage, Freight & Shipping     | 150.00            | 500.00            | -350.00            | 30.0%         |
| 5399 · Petty Cash                      | 0.00              | 0.00              | 0.00               | 0.0%          |
| 5400 · Refund - Water Deposits         | 1,030.03          | 2,000.00          | -969.97            | 51.5%         |
| 5450 · Returned Checks                 | 0.00              | 200.00            | -200.00            | 0.0%          |
| 5510 · Sales Tax Expense (Trash)       | 50.00             | 5,000.00          | -4,950.00          | 1.0%          |
| 5530 · Seminars - Training Courses     | 360.00            | 1,500.00          | -1,140.00          | 24.0%         |
| 5540 · Subscriptions, Dues & Permits   | 5,313.31          | 5,200.00          | 113.31             | 102.2%        |
| 5700 · Trash Pickup                    | 23,697.79         | 115,547.00        | -91,849.21         | 20.5%         |
| 5710 · Travel/Mileage                  | 0.00              | 500.00            | -500.00            | 0.0%          |
| 5715 · Computer                        |                   |                   |                    |               |
| 5716 · Consulting Fees                 | 3,043.08          | 9,900.00          | -6,856.92          | 30.7%         |
| 5715 · Computer - Other                | 0.00              | 3,420.00          | -3,420.00          | 0.0%          |
| <b>Total 5715 · Computer</b>           | <b>3,043.08</b>   | <b>13,320.00</b>  | <b>-10,276.92</b>  | <b>22.8%</b>  |
| 5720 · Utilities                       |                   |                   |                    |               |
| 5721 · Electric Services               | 9,998.84          | 27,100.00         | -17,101.16         | 36.9%         |
| 5725 · Pagers/2-Way Radios             | 0.00              | 260.00            | -260.00            | 0.0%          |
| 5726 · Telephone Services              | 1,128.90          | 2,709.00          | -1,580.10          | 41.7%         |
| <b>Total 5720 · Utilities</b>          | <b>11,127.74</b>  | <b>30,069.00</b>  | <b>-18,941.26</b>  | <b>37.0%</b>  |
| 5800 · Water & Sewer                   |                   |                   |                    |               |
| 5801 · W&S Maint & Repair              | 1,303.78          | 144,000.00        | -142,696.22        | 0.9%          |
| 5802 · W&S Parts & Equipment           | 162,172.00        | 10,000.00         | 152,172.00         | 1,621.7%      |
| 5803 · W&S Testing/Samples             | 710.87            | 1,200.00          | -489.13            | 59.2%         |
| 5804 · Vehicle Maint/Repairs           | 0.00              | 500.00            | -500.00            | 0.0%          |
| 5805 · Water & Sewer - Chemicals       | 3,628.07          | 6,000.00          | -2,371.93          | 60.5%         |
| 5812 · Water & Sewer Testing & Samples | 84.00             | 10,000.00         | -9,916.00          | 0.8%          |
| 5813 · Water - Other                   | 1,273.73          |                   |                    |               |
| 5800 · Water & Sewer - Other           | 3,365.40          |                   |                    |               |
| <b>Total 5800 · Water &amp; Sewer</b>  | <b>172,537.85</b> | <b>171,700.00</b> | <b>837.85</b>      | <b>100.5%</b> |

**City of Blue Ridge Revenue  
Profit & Loss Budget vs. Actual  
October 2021 through September 2022**

|                                | Oct '21 - Sep 22  | Budget            | \$ Over Budget     | % of Budget   |
|--------------------------------|-------------------|-------------------|--------------------|---------------|
| 5810 · Water Bill Expense      | 36.45             | 0.00              | 36.45              | 100.0%        |
| 5901 · Equipment Loan          | 11,180.03         | 14,865.00         | -3,684.97          | 75.2%         |
| 5999 · Bad Debt Expense        | 0.00              | 0.00              | 0.00               | 0.0%          |
| 6700 · Capital Outlay          | 0.00              | 15,047.00         | -15,047.00         | 0.0%          |
| <b>Total Expense</b>           | <b>521,375.14</b> | <b>711,080.50</b> | <b>-189,705.36</b> | <b>73.3%</b>  |
| <b>Net Ordinary Income</b>     | <b>6,682.18</b>   | <b>0.00</b>       | <b>6,682.18</b>    | <b>100.0%</b> |
| <b>Other Income/Expense</b>    |                   |                   |                    |               |
| Other Income                   |                   |                   |                    |               |
| 4210 · Earned Interest         | 40.10             | 0.00              | 40.10              | 100.0%        |
| <b>Total Other Income</b>      | <b>40.10</b>      | <b>0.00</b>       | <b>40.10</b>       | <b>100.0%</b> |
| <b>Other Expense</b>           |                   |                   |                    |               |
| 6999 · Transfer to Other Funds | -250.00           |                   |                    |               |
| <b>Total Other Expense</b>     | <b>-250.00</b>    |                   |                    |               |
| <b>Net Other Income</b>        | <b>290.10</b>     | <b>0.00</b>       | <b>290.10</b>      | <b>100.0%</b> |
| <b>Net Income</b>              | <b>6,972.28</b>   | <b>0.00</b>       | <b>6,972.28</b>    | <b>100.0%</b> |



**Kenneth L. Maun  
Tax Assessor Collector  
Collin County  
2300 Bloomdale Rd  
P.O. Box 8046  
McKinney, Texas 75070  
972- 547-5020  
Metro 424-1460 Ext.5020  
Fax 972-547-5040**

**December 10, 2021**

**Mayor Rhonda Williams  
City of Blue Ridge  
200 S. Main  
Blue Ridge, Texas 75424**

**Dear Mayor Williams,**

**Enclosed is the Monthly Collection Report for:  
The City of Blue Ridge tax collections for the month were:**

**November 2021  
36,923.42**

**Sincerely,**



**Kenneth L. Maun  
Tax Assessor Collector**

**Attachment**

**cc: Edie Sims, City Secretary**

**KM:jd**

Kenneth L Maun  
 Tax Assessor/Collector  
 Collin County  
 P O Box 8046  
 McKinney Tx 75070

Monthly Collection Status Report  
 November 2021

City of Blue Ridge #08

|                                           | Collections<br>Month of November | Cumulative Total<br>10/1/21 thru 11/30/21 | %<br>of Collections |
|-------------------------------------------|----------------------------------|-------------------------------------------|---------------------|
| <b>Current Tax Year Collections</b>       |                                  |                                           |                     |
| Base M&O                                  | 30,220.37                        | 35,347.47                                 | 13.34%              |
| Base I&S                                  | 6,594.29                         | 7,713.05                                  |                     |
| Late Rendition Penalty                    | 5.62                             | 8.51                                      |                     |
| P&I M&O                                   | 0.00                             | 0.00                                      |                     |
| P&I I&S                                   | 0.00                             | 0.00                                      |                     |
| P&I I&S Bond                              |                                  | 0.00                                      |                     |
| Attorney Fee                              | 0.00                             | 0.00                                      |                     |
| <b>Subtotal</b>                           | <u>36,820.28</u>                 | <u>43,069.03</u>                          | <b>13.34%</b>       |
| <b>Delinquent TaxYears Collections</b>    |                                  |                                           |                     |
| Base M&O                                  | 68.91                            | 1,011.98                                  |                     |
| Base I&S                                  | 15.63                            | 229.60                                    |                     |
| Late Rendition Penalty                    | 0.00                             | 0.00                                      |                     |
| P&I M&O                                   | 15.16                            | 204.46                                    |                     |
| P&I I&S                                   | 3.44                             | 46.40                                     |                     |
| P&I I&S Bond                              |                                  | 0.00                                      |                     |
| Attorney Fee                              | 15.47                            | 223.86                                    |                     |
| <b>Subtotal</b>                           | <u>118.61</u>                    | <u>1,716.30</u>                           | <b>0.53%</b>        |
| <b>Combined Current &amp; Delinquent:</b> |                                  |                                           |                     |
| Base M&O                                  | 30,289.28                        | 36,359.45                                 |                     |
| Base I&S                                  | 6,609.92                         | 7,942.65                                  |                     |
| Late Rendition Penalty                    | 5.62                             | 8.51                                      |                     |
| P&I M&O                                   | 15.16                            | 204.46                                    |                     |
| P&I I&S                                   | 3.44                             | 46.40                                     |                     |
| P&I I&S Bond                              |                                  | 0.00                                      |                     |
| Attorney Fee                              | 15.47                            | 223.86                                    |                     |
| <b>Total Collections</b>                  | <u>36,938.89</u>                 | <u>44,785.33</u>                          | <b>13.87%</b>       |
| <b>Original 2021 Tax Levy</b>             |                                  | <u>322,807.68</u>                         | <b>100.00%</b>      |

Kenneth L Maun  
 Tax Assessor/Collector  
 Collin County  
 P O Box 8046  
 McKinney Tx 75070

Cumulative Comparative Collection Status Report  
 November 2021

City of Blue Ridge #08

| Current Tax Year Collections     | Collections thru  |               | Collections thru  |               |
|----------------------------------|-------------------|---------------|-------------------|---------------|
|                                  | November 2021     | % Collections | November 2020     | % Collections |
| Base M&O                         | 43,060.52         | 13.34%        | 33,774.10         | 10.47%        |
| Late Renditon Penalty            | 8.51              |               | 16.96             |               |
| P&I M&O                          | 0.00              |               | 0.00              |               |
| Attorney Fee                     | 0.00              |               | 0.00              |               |
| Subtotal                         | <u>43,069.03</u>  | 13.34%        | <u>33,791.06</u>  | 10.48%        |
| Delinquent Tax Years Collections |                   |               |                   |               |
| Base M&O                         | 1,241.58          |               | 369.17            |               |
| Late Renditon Penalty            | 0.00              |               | 0.00              |               |
| P&I M&O                          | 250.86            |               | 127.64            |               |
| Attorney Fee                     | 223.86            |               | 68.74             |               |
|                                  | 0.00              |               | 0.00              |               |
| Subtotal                         | <u>1,716.30</u>   | 0.53%         | <u>565.55</u>     | 0.18%         |
| Combined Current & Delinquent:   |                   |               |                   |               |
| Base M&O                         | 44,302.10         |               | 34,143.27         |               |
| P&I M&O                          | 250.86            |               | 127.64            |               |
| Late Renditon Penalty            | 8.51              |               | 16.96             |               |
| Attorney Fee                     | 223.86            |               | 68.74             |               |
|                                  | 0.00              |               |                   |               |
| Total Collections                | <u>44,785.33</u>  | 13.87%        | <u>34,356.61</u>  | 10.65%        |
| Adjusted 2020 Tax Levy           |                   |               | <u>322,535.20</u> | 100.00%       |
| Original 2021 Tax Levy           | <u>322,807.68</u> | 100.00%       |                   |               |



Kenneth L Maun  
 Tax Assessor/Collector  
 Collin County  
 P O Box 8046  
 McKinney Tx 75070

Levy Outstanding Status Report  
 November 2021

City of Blue Ridge #08

|                                          | Current Tax Year  | Delinquent Tax Years |
|------------------------------------------|-------------------|----------------------|
| Current Month:                           |                   |                      |
| Tax Levy Remaining as of 10/31/21        | 318,962.43        | 8,812.54             |
| Base M&O Collections                     | 36,814.66         | 84.54                |
| Supplement/Adjustments                   | 304.58            | 0.00                 |
| Write-off                                | 0.00              | 0.00                 |
| Remaining Levy as of 11/30/21            | <u>282,452.35</u> | <u>8,728.00</u>      |
| Cumulative (From 10/01/21 thru 11/30/21) |                   |                      |
| Original 2021 Tax Levy (as of 10/01/21)  | 322,807.68        | 9,969.58             |
| Base M&O Collections                     | 43,060.52         | 1,241.58             |
| Supplement/Adjustments                   | 2,705.19          | 0.00                 |
| Write-off                                | 0.00              | 0.00                 |
| Remaining Levy as of 11/30/21            | <u>282,452.35</u> | <u>8,728.00</u>      |

Kenneth L. Maun  
 Tax Assessor/Collector  
 Collin County  
 P O Box 8046  
 McKinney Tx 75070

Monthly Distribution Report  
 November 2021

City of Blue Ridge #08

|                                           | Distribution<br>Month of November | Distribution<br>10/1/21 thru 11/30/21 |
|-------------------------------------------|-----------------------------------|---------------------------------------|
| Weekly Remittances:                       |                                   |                                       |
| Week Ending 11/5/21                       | 1,708.79                          | 1,811.93                              |
| Week Ending 11/12/21                      | 5,823.18                          | 7,560.25                              |
| Week Ending 11/19/21                      | 14,559.15                         | 15,419.23                             |
| Week Ending 11/24/21                      | 13,765.84                         | 14,579.84                             |
| Week Ending 11/30/21                      | 1,066.18                          | 5,189.79                              |
| Total Weekly Remittances                  | <u>36,923.14</u>                  | <u>44,561.04</u>                      |
| Overpayment from Prior Month              | 0.00                              | 0.00                                  |
| Excess Refund Remittance Repaid to Entity | 0.00                              | 0.00                                  |
| Commission Paid Delinquent Attorney       | 15.47                             | 223.86                                |
| Entity Collection Fee                     | 0.00                              | 0.00                                  |
| Judgement Interest                        | 0.00                              | 0.00                                  |
| 5% CAD Rendition Penalty                  | 0.28                              | 0.43                                  |
| Total Disbursements                       | <u><u>36,938.89</u></u>           | <u><u>44,785.33</u></u>               |
| Carryover to Next Month                   | 0.00                              | 0.00                                  |

The charts below contain sales tax revenue allocated each month by the Texas State Comptroller. Please contact and search the Texas Comptroller's website if you notice an incorrect amount.

For example, the February allocations reflect December sales, collected in January and allocated in February.

\*Excludes any sales tax retained by the municipality and not remitted to the Comptroller.

- [View Grid Based on Fiscal Year](#)
- [View Grid With All Years](#)

[Download to Excel](#)

**By Calendar Year**

| Year | January  | February | March    | April    | May      | June     | July     | August   | September | October  | November | December | Total     |
|------|----------|----------|----------|----------|----------|----------|----------|----------|-----------|----------|----------|----------|-----------|
| 2021 | \$24,594 | \$29,696 | \$20,292 | \$25,874 | \$29,824 | \$25,941 | \$27,336 | \$31,610 | \$25,421  | \$24,942 | \$32,180 | \$27,226 | \$324,934 |
| 2020 | \$18,516 | \$22,882 | \$18,032 | \$20,028 | \$23,840 | \$23,837 | \$22,854 | \$30,136 | \$22,486  | \$21,852 | \$26,721 | \$23,056 | \$274,240 |
| 2019 | \$14,965 | \$26,513 | \$16,084 | \$13,567 | \$19,591 | \$16,900 | \$16,587 | \$17,849 | \$17,846  | \$17,704 | \$18,763 | \$16,847 | \$213,215 |
| 2018 | \$13,137 | \$19,091 | \$12,219 | \$13,580 | \$19,502 | \$19,937 | \$17,445 | \$22,987 | \$14,110  | \$14,338 | \$17,996 | \$15,614 | \$199,954 |
| 2017 | \$15,763 | \$17,919 | \$13,277 | \$11,886 | \$16,248 | \$14,238 | \$13,124 | \$22,031 | \$23,142  | \$13,654 | \$18,552 | \$13,595 | \$193,429 |
| 2016 | \$13,043 | \$15,423 | \$12,633 | \$12,675 | \$16,640 | \$15,459 | \$13,098 | \$15,980 | \$13,237  | \$13,422 | \$16,942 | \$13,012 | \$171,564 |
| 2015 | \$10,832 | \$13,388 | \$8,437  | \$10,235 | \$13,995 | \$11,700 | \$10,528 | \$13,150 | \$11,657  | \$12,017 | \$15,383 | \$11,484 | \$142,808 |
| 2014 | \$9,352  | \$21,018 | \$10,164 | \$9,997  | \$13,758 | \$10,854 | \$9,433  | \$14,642 | \$11,136  | \$12,417 | \$14,043 | \$10,961 | \$147,776 |
| 2013 | \$8,851  | \$13,244 | \$9,099  | \$8,872  | \$10,834 | \$10,316 | \$11,142 | \$12,682 | \$10,025  | \$10,788 | \$12,277 | \$10,455 | \$128,585 |
| 2012 | \$6,914  | \$11,127 | \$8,110  | \$8,068  | \$11,944 | \$7,171  | \$9,616  | \$10,589 | \$9,112   | \$8,743  | \$10,575 | \$8,887  | \$110,854 |

## Alerts

### Stay Alert

Know about changes to your finances and online security. Choose when and what alerts you get by email or text message.

## Accounts

|                                           |                                          |          |
|-------------------------------------------|------------------------------------------|----------|
| <u>4A INDUSTRIAL DEVELOPMENT</u>          | Available Balance<br><b>\$243,117.47</b> | Recent ▼ |
| <u>4B COMMUNITY DEVELOPMENT</u>           | Available Balance<br><b>\$183,768.43</b> | Recent ▼ |
| <u>RESERVE REVENUE ACCOUNT</u>            | Available Balance<br><b>\$10,529.10</b>  | Recent ▼ |
| <u>LIBRARY &amp; LEARNING CENTER FUND</u> | Available Balance<br><b>\$5,952.97</b>   | Recent ▼ |
| <u>ROAD CONSTRUCTION</u>                  | Available Balance<br><b>\$0.00</b>       | Recent ▼ |
| <u>GENERAL TAX</u>                        | Available Balance<br><b>\$152,354.38</b> | Recent ▼ |
| <u>REVENUE</u>                            | Available Balance<br><b>\$173,418.20</b> | Recent ▼ |
| <u>DEPOSIT</u>                            | Available Balance<br><b>\$65,074.67</b>  | Recent ▼ |
| <u>INTEREST &amp; SINKING BOND</u>        | Available Balance<br><b>\$0.00</b>       | Recent ▼ |
| <u>GENERAL PAYROLL ACCT</u>               | Available Balance<br><b>\$0.00</b>       | Recent ▼ |
| <u>REVENUE PAYROLL ACCT</u>               | Available Balance<br><b>\$0.00</b>       | Recent ▼ |
| <u>USDA</u>                               | Available Balance<br><b>\$4,601.00</b>   | Recent ▼ |
| <u>2019 2020 CDBG Sewer Grant</u>         | Available Balance<br><b>\$188,290.51</b> | Recent ▼ |

Building Fund

Available Balance  
**\$0.00**

Recent ▼

Downtown Revitalization

Available Balance  
**\$100.00**

Recent ▼

STREET IMPROVEMENTS-CO

Available Balance  
**\$0.00**

Recent ▼

ENCUMBERED REV

Current Balance  
**\$24,209.57**

Recent ▼

WATER DEPOSITS

Current Balance  
**\$0.00**

Recent ▼



| <b>Location</b>                             | <b>Notes</b>                                                                                                                                      | <b>Code</b>    |
|---------------------------------------------|---------------------------------------------------------------------------------------------------------------------------------------------------|----------------|
| Nov 26, 2021 10:12 AM<br>201 n morrow st    | we picked up a contained feral cat at this address                                                                                                | Animal Control |
| Nov 23, 2021 12:40 PM<br>303 s church       | we picked up two semi feral kittens from this address                                                                                             | Animal Control |
| Nov 23, 2021 10:34 AM<br>200 South Main St. | Patrolled city focusing on stray animals. Spoke with Joni.                                                                                        | Animal Control |
| Nov 18, 2021 2:00 PM<br>303 s church        | Removed a trapped feral cat from this location.                                                                                                   | Animal Control |
| Nov 18, 2021 1:59 PM<br>405 ridge way       | Responded to a complaint regarding a dead animal on the roadway outside this location, carcass was removed.                                       | Animal Control |
| Nov 18, 2021 1:58 PM<br>212 willow ln       | Responded to a complaint regarding a dead animal on the roadway outside this address, the carcass was not there upon arrival.                     | Animal Control |
| Nov 18, 2021 1:56 PM<br>210 high ridge      | Responded to a loose dog call on high ridge, call claimed the dog was loose from this location, no loose dogs were found, a door hanger was left. | Animal Control |
| Nov 18, 2021 10:50 AM<br>200 South Main St. | Patrolled city focusing on stray animals. Spoke with joni.                                                                                        | Animal Control |
| Nov 11, 2021 8:28 AM<br>200 South Main St.  | Patrolled city focusing on stray animals. spoke to joni                                                                                           | Animal Control |

| <b>Location</b>                            | <b>Notes</b>                                                                                                                             | <b>Code</b>    |
|--------------------------------------------|------------------------------------------------------------------------------------------------------------------------------------------|----------------|
| Nov 5, 2021 7:30 PM<br>112 harmon circle   | Responded to an after hours call regarding a loose dog belonging to this location attacking another loose dog, citations will be issued. | Animal Control |
| Nov 4, 2021 11:43 AM<br>503 s bus 78       | Sat on a trap for about 20 minutes and pulled 2 adult cats and 6 kittens from this location.                                             | Animal Control |
| Nov 4, 2021 11:41 AM<br>200 South Main St. | Patrolled city focusing on stray animals. Spoke with Joni.                                                                               | Animal Control |
| Nov 2, 2021 4:14 PM<br>102 oak st          | PICKED UP TRAP                                                                                                                           | Animal Control |
| Nov 2, 2021 4:14 PM<br>303 oak st          | TRAP HAS BEEN PICKED UP                                                                                                                  | Animal Control |
| Nov 2, 2021 4:12 PM<br>405 w f m 545       | TRAP HAS BEEN PICKED UP                                                                                                                  | Animal Control |
| Nov 2, 2021 10:29 AM<br>105 pruit          | we returned the dog to this address                                                                                                      | Animal Control |

**LEGAL NOTICE  
PUBLIC HEARING**

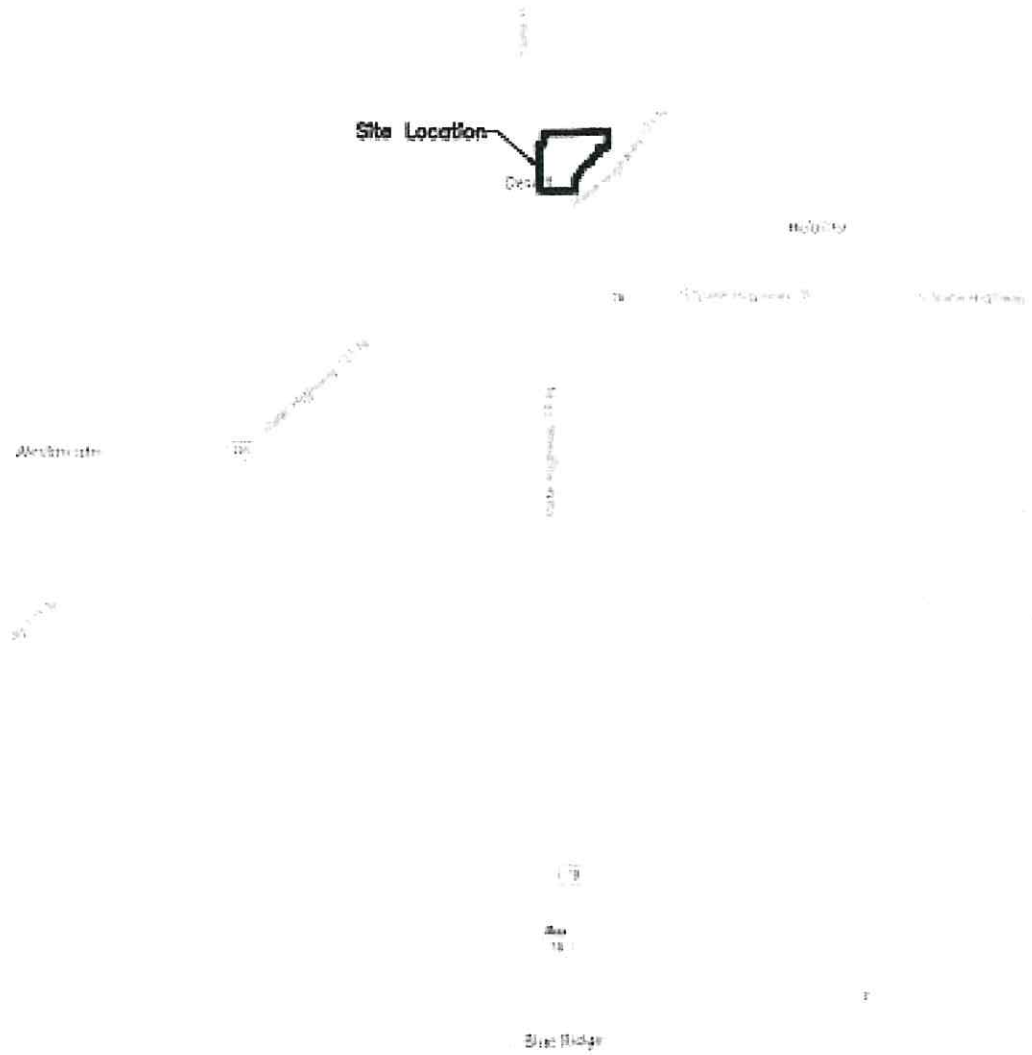
A First Public Hearing of the City of Blue Ridge City Council for Tuesday, January 4, 2022 at 7:00pm at the Blue Ridge Community Center located at 200 W. Tilton to receive public comments and to hear the request for a Preliminary Plat known as Acres at Desert Creek, an addition known as Abstract A1071 JJ McMennay Survey, Tract 2, containing 81.851 acres; and a portion of Abstract A1071 JJ McMennay Survey, Tract 3, containing 13.549 acres; for a total acreage of 95.40 acres to be a residential development of 59 site built homes; and said property is located on the East side of Texas State Highway 160 and the nearest intersection at County Road 584; and also which is located within the City of Blue Ridge's Extra Territorial Jurisdiction.

This hearing is open to any interested persons. Opinions, objections and/or comments relative to this matter may be expressed in writing or in person at the hearing.

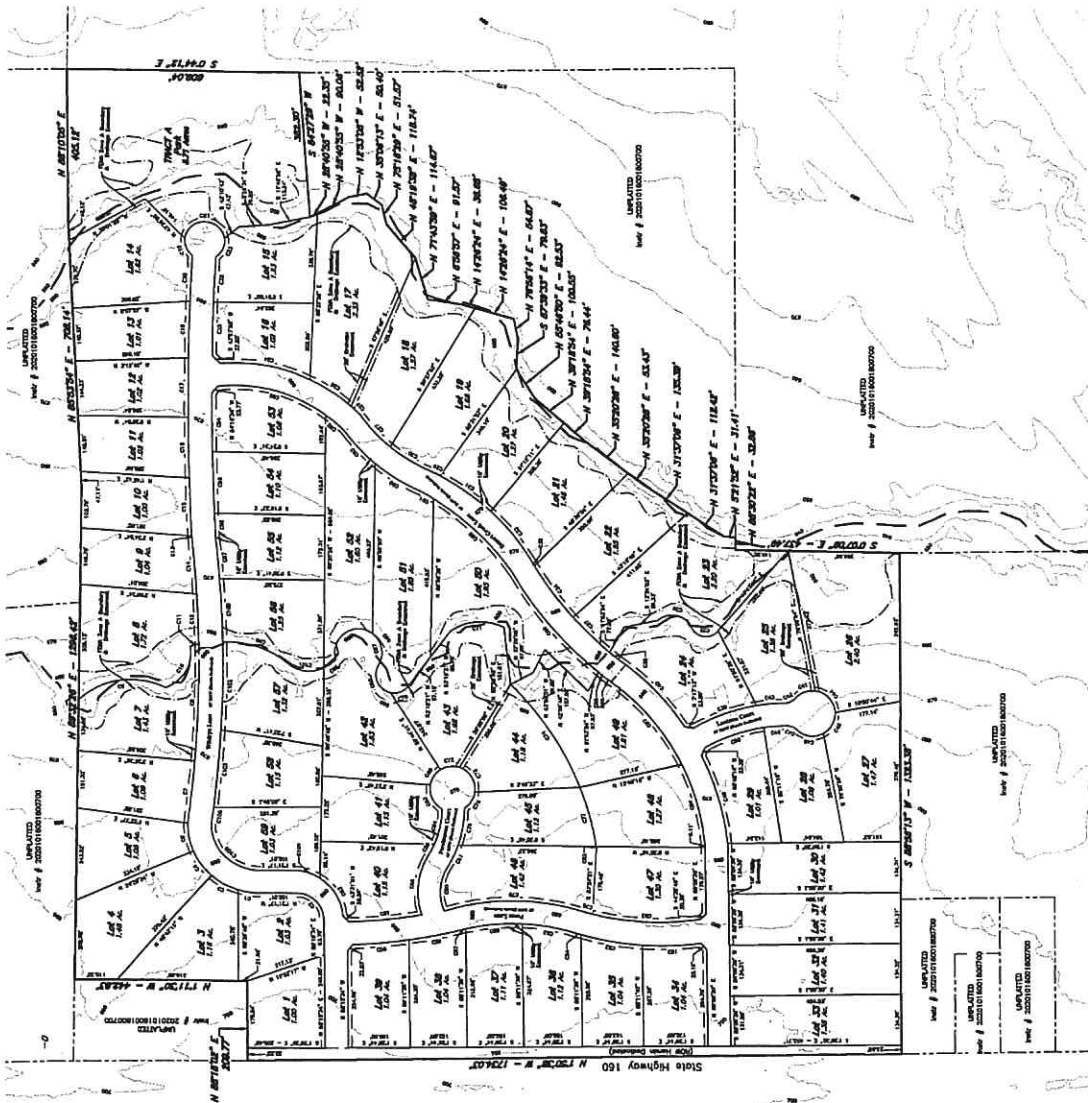
~~~~~  
A Second Public Hearing of the City of Blue Ridge City Council for Tuesday, January 4, 2022 at 7:00pm at the Blue Ridge Community Center located at 200 W. Tilton to receive public comments and to hear the request for a Preliminary Plat known as Acres at Desert Creek, an addition known as Abstract A1071 JJ McMennay Survey, Tract 2, containing 81.851 acres; and a portion of Abstract A1071 JJ McMennay Survey, Tract 3, containing 13.549 acres; for a total acreage of 95.40 acres to be a residential development of 59 site built homes; and said property is located on the East side of Texas State Highway 160 and the nearest intersection at County Road 584; and also which is located within the City of Blue Ridge's Extra Territorial Jurisdiction.

This hearing is open to any interested persons. Opinions, objections and/or comments relative to this matter may be expressed in writing or in person at the hearing.

VICINITY MAP



Lots 1 thru 59 Acres at Desert Creek Residential Subdivision VICINITY MAP



- GENERAL NOTES:**
1. Heavy lines indicate plat lines.
 2. All acreage and dimensions shown on this plat are based on the latest available survey data.
 3. The plat is based on a survey conducted by the Surveyor General of the State of Texas, and the same is subject to the provisions of the Surveyors' Act, Chapter 131, Texas Civil Statutes, and the rules and regulations of the State Surveyors' Board.
 4. All lots are to be conveyed by private deed to the owner of the same.
 5. The plat is subject to the provisions of the Surveyors' Act, Chapter 131, Texas Civil Statutes, and the rules and regulations of the State Surveyors' Board.
 6. All lots are to be conveyed by private deed to the owner of the same.
 7. All lots are to be conveyed by private deed to the owner of the same.
 8. All lots are to be conveyed by private deed to the owner of the same.
 9. All lots are to be conveyed by private deed to the owner of the same.
 10. All lots are to be conveyed by private deed to the owner of the same.
 11. All lots are to be conveyed by private deed to the owner of the same.
 12. All lots are to be conveyed by private deed to the owner of the same.
 13. All lots are to be conveyed by private deed to the owner of the same.

LOT NO.	ACRES	SECTION	TOWNSHIP	RANGE	COUNTY	STATE
1	1.00	36	10N	10E	Collin	Texas
2	1.00	36	10N	10E	Collin	Texas
3	1.00	36	10N	10E	Collin	Texas
4	1.00	36	10N	10E	Collin	Texas
5	1.00	36	10N	10E	Collin	Texas
6	1.00	36	10N	10E	Collin	Texas
7	1.00	36	10N	10E	Collin	Texas
8	1.00	36	10N	10E	Collin	Texas
9	1.00	36	10N	10E	Collin	Texas
10	1.00	36	10N	10E	Collin	Texas
11	1.00	36	10N	10E	Collin	Texas
12	1.00	36	10N	10E	Collin	Texas
13	1.00	36	10N	10E	Collin	Texas
14	1.00	36	10N	10E	Collin	Texas
15	1.00	36	10N	10E	Collin	Texas
16	1.00	36	10N	10E	Collin	Texas
17	1.00	36	10N	10E	Collin	Texas
18	1.00	36	10N	10E	Collin	Texas
19	1.00	36	10N	10E	Collin	Texas
20	1.00	36	10N	10E	Collin	Texas
21	1.00	36	10N	10E	Collin	Texas
22	1.00	36	10N	10E	Collin	Texas
23	1.00	36	10N	10E	Collin	Texas
24	1.00	36	10N	10E	Collin	Texas
25	1.00	36	10N	10E	Collin	Texas
26	1.00	36	10N	10E	Collin	Texas
27	1.00	36	10N	10E	Collin	Texas
28	1.00	36	10N	10E	Collin	Texas
29	1.00	36	10N	10E	Collin	Texas
30	1.00	36	10N	10E	Collin	Texas
31	1.00	36	10N	10E	Collin	Texas
32	1.00	36	10N	10E	Collin	Texas
33	1.00	36	10N	10E	Collin	Texas
34	1.00	36	10N	10E	Collin	Texas
35	1.00	36	10N	10E	Collin	Texas
36	1.00	36	10N	10E	Collin	Texas
37	1.00	36	10N	10E	Collin	Texas
38	1.00	36	10N	10E	Collin	Texas
39	1.00	36	10N	10E	Collin	Texas
40	1.00	36	10N	10E	Collin	Texas
41	1.00	36	10N	10E	Collin	Texas
42	1.00	36	10N	10E	Collin	Texas
43	1.00	36	10N	10E	Collin	Texas
44	1.00	36	10N	10E	Collin	Texas
45	1.00	36	10N	10E	Collin	Texas
46	1.00	36	10N	10E	Collin	Texas
47	1.00	36	10N	10E	Collin	Texas
48	1.00	36	10N	10E	Collin	Texas
49	1.00	36	10N	10E	Collin	Texas
50	1.00	36	10N	10E	Collin	Texas
51	1.00	36	10N	10E	Collin	Texas
52	1.00	36	10N	10E	Collin	Texas
53	1.00	36	10N	10E	Collin	Texas
54	1.00	36	10N	10E	Collin	Texas
55	1.00	36	10N	10E	Collin	Texas
56	1.00	36	10N	10E	Collin	Texas
57	1.00	36	10N	10E	Collin	Texas
58	1.00	36	10N	10E	Collin	Texas
59	1.00	36	10N	10E	Collin	Texas

Preliminary Plat

Lots 1-59
Acres at Desert Creek Addition
to the County of Collin, Texas
Total ±95.40 acres

S. J. [Name]

[Address]

[City, State, Zip]

[Phone Number]

LEGEND

- Plat Lines
- Adjacent Lot Line
- Sublot Line
- Utility Easement
- Creek Right of Way

N

Scale: 1" = 100'

0 20 40 60 80 100

Surveyed and approved by the Surveyors' Board of the State of Texas, on this [Date] day of [Month], 200[Year].

[Signature]

[Title]

Recorded in the Public Records of the County of Collin, Texas, on this [Date] day of [Month], 200[Year].

[Signature]

[Title]

This plat is subject to the provisions of the Surveyors' Act, Chapter 131, Texas Civil Statutes, and the rules and regulations of the State Surveyors' Board.

The plat is based on a survey conducted by the Surveyor General of the State of Texas, and the same is subject to the provisions of the Surveyors' Act, Chapter 131, Texas Civil Statutes, and the rules and regulations of the State Surveyors' Board.

This plat is subject to the provisions of the Surveyors' Act, Chapter 131, Texas Civil Statutes, and the rules and regulations of the State Surveyors' Board.

VOLUNTARY ANNEXATION, TEXT AMENDMENT & REZONE SCHEDULE

Blue Ridge Crossing

City of Blue Ridge

Landowner Petition—100% of owners have signed

Texas Local Government Code, Chapter 43, Subchapter C-3

Scheduled Regular City Council meetings: 02/01/2022 03/01/2022

DONE ON	#	DATE	ACTION TAKEN
	1		<p><u>Voluntary Petition Received</u> Voluntary Petition for Annexation signed by every landowner filed with City under LGC 43.0671. Petition acknowledges pre-annexation 43.016 agreement was offered and declined <i>*Prior to deadline to mail & publish notice, which takes some time to prepare</i></p>
	2	01/15/22 Last day to publish notice in paper. (Be sure to send to paper in advance of paper's deadline to publish by this date.)	<p><u>Newspaper Notice of Zoning Text Amendment Public Hearings</u> Send legal notice of public hearing to newspaper for publication on or before 01/15/22 Note: date of publication must be before the 15th day before (must count both "before" so this translates to 17 full days before hearing) the date of the hearing of the governing body. LGC 211.06(a). Notice of public hearing is published in City's official newspaper and also needs to be published in newspaper for area that is to be annexed if different from City's official newspaper. Re: Public Hearing: 02/01/22 City Council Regular Meeting</p>
	3	02/01/2022 Council Meeting	<p><u>ANNEXATION RESOLUTION & DEVELOPMENT AGREEMENT</u> For the proposed annexed property, the City Council may adopt a Resolution that: Approves voluntary petition Sets one Public Hearing date. [One public hearing is required 43.0673(a)]; and Authorizes the notice and publication of the public hearing. LGC 43.0673(d) Approve Development Agreement including Written Service Agreement (Service Plan)</p> <p><u>ZONING PUBLIC HEARING AND ADOPTION OF ZONING TEXT AMENDMENT</u></p> <ol style="list-style-type: none"> 1. City Council conducts public hearing to hear arguments for and against the text amendment for PD District. 2. Adoption of zoning text amendment ordinance
	4	01/29/2021 Last day to mail notices	<p><u>Mailings for Zoning Change to PD</u> Mail written notice of proposed zoning change by certified mail to:</p> <ol style="list-style-type: none"> 1. Property Owner(s) in the city limits and within 200 feet; and 2. School District(s); and 3. The applicant (owner of the property being zoned) <p>For City with no P&Z Commission, Council cannot adopt zoning changes until 30 days after mailings. LGC 211.006(b). This date is set to meet the 30 day requirement for Mar 1 hearing.</p>

5a	<p>02/09/22 First day to mail notices</p> <p>02/17/22 Last day to mail notices</p>	<p><u>Mailings for Annexation</u> Mail written notice of proposed annexation by certified mail to:</p> <ol style="list-style-type: none"> 1. School District(s) and any other public entity (county, fire protection, emergency medical, any volunteer emergency provider, any taxable entity water control and improvement district, or other district created under Section 52, Article III, or Section 59, Article XVI, Texas Constitution, i.e. MUD in the area); and 2. Railroads with ROW in the area and other public and private entities (e.g., utility companies, etc.). 3. Although not required by statute, we recommend also mailing the notice to the property owners. <p>Note: Notices must be sent on or after the 20th day but before the 11th day before the Public Hearing held on 03/01/2022. LGC 43.905 & 43.9051.</p>
5b	<p>02/09/22 First day notice can be in paper</p> <p>02/17/22 Last day to publish notice in paper.</p> <p>(Be sure to send to paper in advance of paper's deadline to publish by this date.)</p>	<p><u>Newspaper Notice of Annexation Public Hearing</u></p> <ol style="list-style-type: none"> 1. Send legal notice of public hearing to newspaper for publication once 12/15/21-12/24/21. Note: date of publication must be no more than 20 days and no less than 11 days prior to each public hearing. LGC 43.0673(d). Notice of public hearing is published in City's official newspaper and also needs to be published in newspaper for area that is to be annexed if different from City's official newspaper. <p>Re: Public Hearing: 03/01/22 City Council Regular/Special Meeting</p> <p>Note: Must obtain affidavit of publication after notice is published.</p>
6	<p>02/12/22 Last day to publish notice in paper.</p> <p>(Be sure to send to paper in advance of paper's deadline to publish by this date.)</p>	<p><u>Newspaper Notice of Zoning Change Public Hearing</u> Send legal notice of public hearing to newspaper for publication on or before 02/12/22</p> <p>Note: date of publication must be before the 15th day before (must count both "before" so this translates to 17 full days before hearing) the date of the hearing of the governing body. LGC 211.06(a). Notice of public hearing is published in City's official newspaper and also needs to be published in newspaper for area that is to be annexed if different from City's official newspaper.</p> <p>Re: Public Hearing: 03/01/22 City Council Regular Meeting</p>
7	<p>03/01/22 Council Meeting</p>	<p>ANNEXATION PUBLIC HEARING & INSTITUTION OF ANNEXATION</p> <ol style="list-style-type: none"> 1. City Council conducts public hearing to hear arguments for and against the proposal to annex the property 2. Adoption of annexation ordinance <p>Note: (no statutory time period given for the institution of annexation).</p> <p>ZONING PUBLIC HEARINGS AND ADOPTION OF ZONING CHANGE</p> <ol style="list-style-type: none"> 1. City Council conducts public hearing to hear arguments for and against the proposal to zone the property 2. Adoption of zoning ordinance

POST ANNEXATION ADOPTION PROCEDURES

- 1) File certified copy of ordinances with the County Clerk;
- 2) Notification to CAD;
- 3) Notification to Comptroller;
- 4) Notification to Tax Assessor Collector;
- 5) Notification to Public Utility Commission;
- 6) Notification to telecommunication utilities, and other utilities (i.e. electric, gas, water);
- 7) Notification to Texas Department of Transportation (City limit signs);
- 8) Texas Commission on Fire Protection (to update fire insurance rating maps); and
- 9) Revise City Map



Nick Bulaich

Managing Director

777 Main Street

Suite 1525

Fort Worth, Texas 76102

817-332-9710

nick.bulaich@hilltopsecurities.com

January 4, 2022

Public Improvement District (“PID”) Overview

Summary of PIDs

	Public Improvement Districts
Creation	City Council, after receiving petition from landowner
Separate Governmental Entity	No
Allowable Projects	Water, Sewer, Drainage, Roads, Parks, Other
Revenue Stream	Assessments
Debt	Yes - Special Assessment Revenue Bonds
Termination	Once assessments are paid off

Public Improvement Districts (“PID”)

- Defined area within a city or its extraterritorial jurisdiction
- Created by the governing body of a city
- Used to promote higher quality or special public improvements and services in a development
- Ability to levy an assessment on a lot
 - (1) Capital and/or (2) maintenance (or service) assessments
 - Can be levied on different types of properties - residential, commercial and retail
 - Normally included on an ad valorem property tax bill
 - Unlike property taxes, Capital PID assessment/lien can be prepaid at anytime
 - Subordinate to governmental ad valorem taxes, but superior to private financing (mortgage)
- Fund water, sewer, drainage, roads, public safety, parks, and other development enhancements
 - Properties that benefit from the improvements within the PID pay for the improvements via the assessment

Public Improvement Districts (“PID”)

- **Goal is to limit repayment for special benefits to the area within PID**
 - Unlike TIFs, PIDs are empowered to levy assessments against property within their boundaries without regard to growth in actual assessed valuations.
 - For example, a PID may assess a charge of \$100 per lot in a proposed residential development. The owner of the lot must pay the \$100 lot assessment whether the lot remains vacant or if a \$1 million home is built on it.

- **Service and Assessment Plan (“SAP”) is required**
 - Indicates project plan, maintenance and administration plan, allocates and levies assessments based on benefit and capital funding process and timing. The SAP is updated annually and approved by City Council.

- **City may issue debt for the PID**
 - Debt is repaid by the levy of assessments against all property within the district.
 - Does not pledge or encumber any City funds.
 - Currently, rating agencies’ positions are that PID debt does not impact a city’s credit ratings.

Important PID Concepts

- **Tax stack**
 - PID assessment is converted to a tax rate equivalent (based on the assumed future home value) and added to all overlapping taxes
 - Metric that is compared to developments in the surrounding area
 - Important to remember that the tax stack is a metric at a point in time as tax rates and home values change:

<u>EXAMPLE (for illustrative purposes only)</u>		FY 2022
	Jurisdiction	Tax Rate
City		\$ 0.5252
ISD		1.4603
College District		0.0812
County		0.1681
Existing Tax Rate		\$ 2.2348
<u>Example City PID</u>		
<i>PID Annual Installment as Tax Rate Equiv.</i>		\$ 0.6652
Net Total Tax Rate Equivalent		\$ 2.9000

- **Value to lien ratio**
 - Normally try to target 3 to 1 when issuing bonds
 - Example: Value of land (and horizontal improvements/infrastructure) is \$30 million, maximum bond issuance of \$10 million

Important PID Concepts

- **Value proposition**
 - What is the City getting in return?
- **Due diligence on the Developer**
 - Property/Payment concentration before ultimate property owners; wherewithal to complete development
- **Reimbursement bonds versus “dirt” bonds**
 - “Dirt” bonds provide upfront financing; carry more development risk
 - Reimbursement bonds are generally less risky due to completed infrastructure and possibly a more diversified payer base
- **Bond structure**
 - Level installment payments; term of debt
- **Affordability of development**
 - Is the end product and tax rate stack competitive with surrounding markets?
- **Significant long-term commitment and involvement by the City**
 - While many on-going functions are outsourced, City covenants that it will foreclose on property in the event of a non-payment of assessments
 - Communication with future residents within the PID
 - Affect on other developments within the community

City Administrative Responsibilities with a PID

- Approval of a Development Agreement
- Creation
- Selection of consultants
- Levy of assessments
- Issuance of debt
 - Collection of assessments for bondholder payments
 - SEC reporting
 - IRS – tax exemption
- Foreclosure on property for non-payment, if necessary
- Annual administrative costs
 - May be paid out of the PID



Contract Modification Document

Office of the Purchasing Agent
Collin County Administration Building
2300 Bloomdale Rd, Ste 3160
McKinney, TX 75071
972-548-4165

Vendor: City of Blue Ridge
Attn: City Manager
200 S. Main St.
Blue Ridge, TX 75424

Contract No. 2019-087
Contract: Ambulance Services Agreement,
Blue Ridge

YOU ARE DIRECTED TO MAKE THE FOLLOWING MODIFICATION TO THIS CONTRACT

Item #1 Renew contract for a twelve (12) month period at the same terms and conditions of the contract from November 1, 2021, through October 31, 2022.

Item #2 Payment for contract year November 1, 2021, through October 31, 2022, is \$9,471.78. Payments will be made quarterly. Payment for quarters 1 and 2 will be \$2,160.27 each; payment for quarter 3 will be \$2,492.55; and payment for quarter 4 will be \$2,658.69.

Except as provided herein, all terms and conditions of the contract remain in full force and effect and may only be modified in writing signed by both parties.

Amendment No. 3 has been accepted and authorized by authority of Collin County Commissioners Court by Court Order No. _____ effective on 11/1/2021.

ACCEPTED BY:

SIGNATURE

(Print Name)

TITLE: _____

DATE: _____

SIGNATURE

Michelle Charnoski, NIGP-CPP, CPPB
(Print Name)

TITLE: Purchasing Agent

DATE: _____

Looking back at 2021

Rezone/Replat/Subdivide:

- Bailey Barnyard - Final (ETJ)
- Deer Creek Ranch Estates - Preliminary (ETJ)
- Heritage Grove -Preliminary (Inside City Limits)
- Hidden Hills – Preliminary (ETJ)
- James Lee Place – Final (Inside City Limits)
- Kellaheer Estates – Final (ETJ)
- Neal Estates – Final (ETJ)
- Blue Ridge Crossing – Concept (to be annexed)
- Qariyah Addition – Preliminary (ETJ)
- Sides Ranch – Final (ETJ)
- Westridge Estates of Blue Ridge – Preliminary (Inside City Limits)
- Worth Addition – Final (Inside City Limits)

New Homes:

- 107 Guavin
- 109 Guavin
- 2/4 Bowling Lane
- 6/8 Bowling Lane
- 10/12 Bowling Lane

Building Permits:

- 17 Food Inspection Visits
- 13 Fence; 4 Accessory/Garage; 3 New Commercial permit; 2 New Residential permit
- 14 Trades (Plumbing, Electric, AC)
- 4 Garage Sale permits
- **57 Total Permits constituting \$17,308.04**

Equipment:

- Wood Chipper

Public Works:

- 29 Water Leaks
- 19 Sewer backups/repairs
- 2 Cleanout repairs
- 1 Manhole repair
- 3 Stop sign replacements
- 3 Culvert installation/repairs

- 15 Sewer plant repairs
- 5 Well repairs
- 2 Park repairs
- Ongoing rocking/asphalt road patching
- Ongoing tree trimming

Ordinances:

- Cancelled 2021 Election
- Implement Impact Fees for Water and Wastewater
- Upgrade Building Codes to 2018 and 2020 NEC
- Cancelled 11/02/2021 Election
- Adopt 2021-2022 Budget
- Ad Valorem Taxes for 2021-2022
- Adopt Tax Roll for 2021-2022
- Repeal One-Way Traffic on N Church
- Zenner Water Meters Required

Resolutions:

- Comprehensive Plan Grant Closeout
- Call 05/01/2021 General Election
- ACSC Participation
- Procurement Policy
- Signatories for Downtown Revitalization Grant
- Civil Rights Policy
- Denial of TNMP 2021 Rates
- Mayor Expenditure Allowance
- Call 11/02/2021 General Election
- Award AMR System and Install
- AMR Funding
- Atmos Mid-Tex Rate Review Settlement
- Award SCADA System and Install
- Surplus Property for 2006 Ford Truck
- CAD Board of Directors Election
- Opioid Settlement
- Newspaper Designation

Contracts/Agreements:

- Ambulance Service through Collin County
- Fire Inspection and Fire Plan Review through Collin County
- Lease on Standpipe
- CPI Increase for Sanitation Solutions

Other Improvements/Projects:

- Water line service moved from old 1" steel line to 4" pvc on N Bus 78
- Water line service improved from 1" steel line to 4" pvc on South Main
- Sewer line service improved with manhole to allow 4 more lots on South Main
- City Hall restroom remodel
- Cut and capped off old water line not in use on N Bus 78
- Manhole Inspections and clearing of lines

Grant Projects:

- Sewer Grant improvements on North Church, Davis, Dunn and Richardson – completed 09/2021
 - Included was asphalt surface improvement on N Church from W Lamm to School St
- Automated Meter Reading System – installation completed 10/15/2021
- Downtown Revitalization Grant – engineering stage
- Planning Grant – closed 01/05/2021

Other Projects:

- SCADA system funded by ARPA – to be installed early 2022
- Planning for Bar Screen improvements at WWTP with second round of ARPA funds